

Weld defects and failures: quantifying fitness-for-service

How finite element mathematical simulations can mitigate risk and cut costs

Fatigue in welded steel components is often initiated by mechanical vibration, corrosion, and thermal cycling. Fitness-for-service analysis is the most viable step in determining the safety and financial risk factors related to component repair or replacement. This article shares insight about managing risk specific to weld failures.

By Dr. William J. O'Donnell, Founder, O'Donnell Consulting Engineers, Inc.

The predictive power of finite element mathematical simulations can often prevent the loss of millions of dollars in downtime, industrial catastrophes, injuries, and loss of life.

Cyclical stress factors

In materials science, fatigue refers to failure that results from cyclical stress. Most often, such failures manifest themselves in some form of mechanical or thermal fatigue, often as a result of vibration, loading and unloading, or repetitive fluctuations in temperature. These failures are often blamed on the designer or fabricator, when the real cause is transient operating conditions. For instance, operators often increase applied loads and temperatures in an effort to increase productivity; as a result, they inadvertently push the limits of fatigue damage and increase the risk of failures.

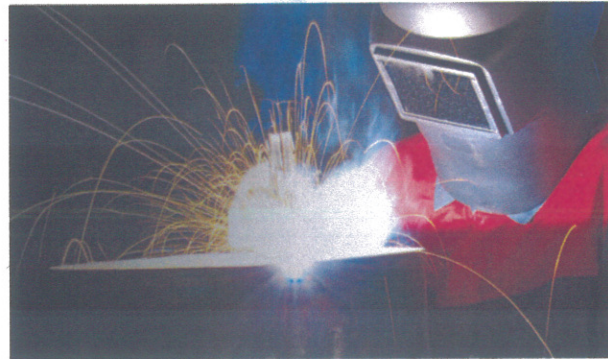
As a point of reference, it is estimated that

fatigue contributes to approximately 90% of all mechanical service failures¹. An increasing demand for high performance industrial systems has exacerbated the likelihood of structural fatigue.

Fatigue as the cause of weld failures

Weld failures present one of the most serious financial, safety, and reputational threats across many sectors including: chemical, petrochemical, aerospace, automotive, construction, and energy. Any component that exceeds its fatigue or endurance level can trigger a weld failure. They can occur suddenly, causing catastrophic failures that could have been prevented by prior analysis and repair.

The nuclear industry was the impetus to develop fitness-for-service (FFS) practices. In particular, the ability to quantify the tolerance of weld defects played a key role in vali-



dating the safety of nuclear vessels.

Still today, however, few industries outside of chemical and nuclear are well-versed on the availability and exactness of FFS procedures. As a result, many companies fail to verify fatigue tolerance and safety margins before making the costly decision to replace components that are evidencing surface damage.

By employing FFS measures, many companies could have the capacity to design and safely implement repairs to restore fatigue and fracture-safety margins, even given an

The predictive power of mathematical simulations and fatigue evaluations

Modern materials science and mathematical simulations provide the most robust method of evaluating FFS. Finite element analysis is a scientific process that integrates engineering principles and mathematical physics. As the name implies, finite element analysis divides the entirety of a complex structure into multiple and precise elements. This exercise identifies what occurs under various conditions of cyclical

BRISMET

BRISTOL METALS, LLC

Manufacturer of Welded Pipe and Tube in:

- Nickel Alloy
- Duplex/Super Duplex
- 6% Moly Stainless Steel

Bristol Metals Acquires Marcegaglia USA's Munhall Stainless Steel Pipe and Tube Operations

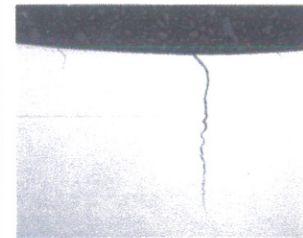
The combined strength of our plants offers:

- The largest capacity to produce welded stainless steel, nickel alloy and duplex pipe and tube in North America
- Quick-turn inventory and manufacturing capability for a full range of tubing, welded pipe and heavy wall products
- Pipe diameters from 1/2" to 144" (12.7mm to 3700mm) with wall thicknesses greater than 2" (50.8mm)
- Tube diameters from 5/8" to 8" (15.9mm to 203.2mm) in wall thicknesses from 0.025" (0.64mm) and thicker

Bristol Metals, LLC — Bristol Operations
390 Bristol Metals Road, Bristol, Tennessee 37620 USA sales@brismet.com

Bristol Metals, LLC — Munhall Operations
1001 E. Waterfront Drive, Munhall, Pennsylvania 15120 USA

www.brismet.com



This heat exchanger exhibits multiple cracks at the flange bolt holes because design did not accommodate severe thermal transients

operational environment of cyclical stresses. Making an informed decision to repair or replace the compromised component requires a multi-faceted investigation that yields quantifiable results.

Companies often opt for metallurgical analyses to evaluate and act in response to weld cracks. Metallurgical analyses are limited, however, and unlikely to address fatigue or fracture analyses. Without quantifying a component's integrity, decision makers are left to select a path of action based on an incomplete picture. Only in the presence of reliable data can the decision to extend fatigue life be made with confidence.

stress and allows for accurate predictions about future cracking.

Mathematical finite element simulations are able to quantify stresses, even with increased operating loads and the reduction in brittle and ductile fracture margins that arise from higher applied static and dynamic loads. Simulations are also useful in quantifying the reduction in fatigue life due to an increased number of operating cycles, as well as the relationship between failure causation and aggressive operating conditions. Also of importance, mathematical finite element simulations can confirm whether stress limits meet industry Codes and Standards.

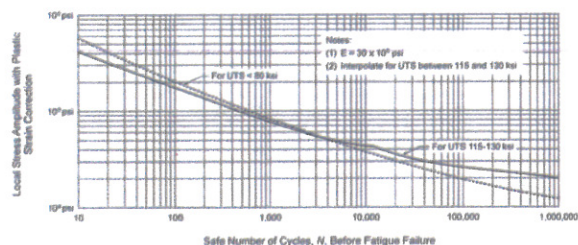


Figure 1: Design fatigue curves for carbon, low alloy, series 4XX, high alloy steels, and high tensile steels for temperatures not exceeding 700°F (371°C).

When is fitness-for-service the right choice?

Two circumstances often prevent companies from engaging an expert to conduct an FFS evaluation. First, many companies are unaware of the value of finite element analyses and mathematical simulations in identifying and resolving fatigue-related failures. Secondly, because fatigue failures can occur as a result of unexpected cyclical stresses rather than an anticipated source of stress, the existence of fatigue damage is often overlooked.

Specific to weld failures, FFS evaluations can demonstrate the structural integrity of tanks, vessels, and other process equipment. The acquired data empirically supports the decision to run, repair, or replace the component in question. At times, companies assume that weld repairs are not an option, so they replace damaged components. In many cases, however, repairs are feasible. The critical decision to repair or replace an in-service component can be guided by finite element mathematical analysis.

In general, FFS investigations are well-suited when companies need to quantify and predict continued service: the residual life of an in-service component; safe operation beyond the original design life; tolerance to defects; and the impact of an outage or shutdown.

Capturing the value of FFS

Most companies are stretched to the limit to increase production, decrease costs, and ensure safety. Unfortunately, fatigue failures are all too common, and they work in direct opposition to a company's objectives.

Decision makers can more confidently mitigate the risk and expense of failures when they can reliably assess their options. FFS evaluations can quantify and demonstrate the ability to extend service life and avoid the costly process of replacement. FFS evaluations often reduce maintenance and operating costs as well, which is one more benefit companies can glean in today's competitive marketplace.

The prevalence of joint weld failures

Perhaps the most prevalent and underestimated weld failure is the common soldered joint. Few companies give enough attention to the dangers that exist in their plants, storage tanks, equipment, or heating and plumbing systems as a result of soldered joints.

Unseen risk

The benefit of a soldered alloy is that it can be melted sufficiently to join together two other pieces of metal. Unfortunately, it is this same melting property that makes a soldered joint so likely to fail.

The average melting temperature of solder is a relatively low 350° Fahrenheit. What might otherwise be a non-threatening equipment malfunction or overheated system can become fatal if the temperature rises above this level.

Unexpected fatalities

Case in point: when a teacher noticed steam escaping from a faucet in one of the school's restrooms, she went to the boiler room to investigate. She was in the wrong place at the wrong time. The increased temperature of the heating system had caused the soldering on both ends of an elbow to melt. Because the system was pressurized, the soldered piece did more than loosen; it shot like a missile, striking and immediately killing the teacher.

Call to action

It is an all too common practice that companies live in reaction mode, identifying and resolving weld failures as they occur. The very real threat posed by soldered joints often goes unnoticed.

To avoid interruption of operations and the potential loss of life, heater systems should be inspected for faulty temperature controls on an annual basis.

References

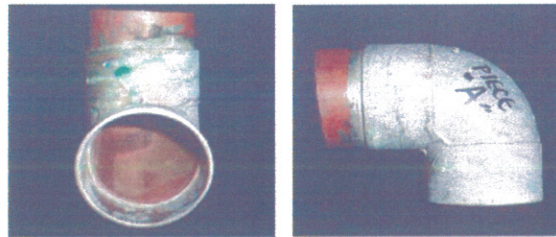
1. http://www.asmeinternational.org/documents/10192/1849770/05224G_Chapter14.pdf



About the author

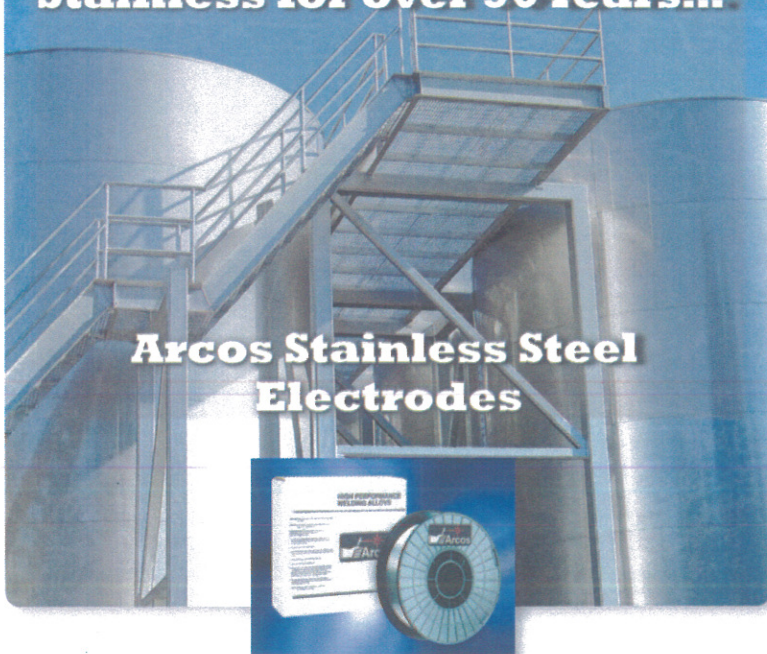
Dr. William J. O'Donnell is founder of O'Donnell Consulting Engineers, Inc. a firm that provides failure causation evaluations in state, federal, and international courts. In addition to materials testing for metallurgical failure analyses, the firm uses finite element computer simulations and materials to quantify engineering failure causations.

Dr. O'Donnell is active in Codes and Standards in the areas of fatigue and fractures, and he has published more than 100 technical papers related to stress analysis methods, elevated temperature design, and corrosion fatigue life. He can be reached at 412-835-5007 or by email at wjo@odonnellconsulting.com. More information is available at www.odonnellconsulting.com.



The increased temperature of a heating system caused the soldering on both ends of this elbow to melt, resulting in the death of a high school teacher.

Supplying the World with Stainless for over 90 Years...



Arcos Stainless Steel Electrodes

Arcos produces a comprehensive line of premium bare wire, covered and tubular stainless steel alloy welding electrodes. Whatever your demanding application – from nuclear or military construction to power generation or petrochemical plants, pipelines to car exhaust systems, shipbuilding to paper production, and so many others – Arcos has the right stainless steel electrode to meet your exacting requirements.

These outstanding, made-in-America Arcos electrodes are available in a broad range of compositions consisting of austenitic, duplex and superduplex, martensitic and ferritic grades and are manufactured to your specific needs. They include:

- Covered electrodes in -15, -16 and -17 coating options.
- Solid wires for use in GTAW GMAW and submerged arc processes.
- Flux cored wires for flat and horizontal or out-of-position work, with or without shielding gas.
- Metal cored wires for use in GTAW GMAW and submerged arc processes.

And, of course, all Arcos electrodes are backed by our experienced team of technical specialists and customer service professionals.

For more information on the entire spectrum of Arcos stainless steel electrode products, contact us at 1-800-233-8460 or visit our website at www.arcos.us

